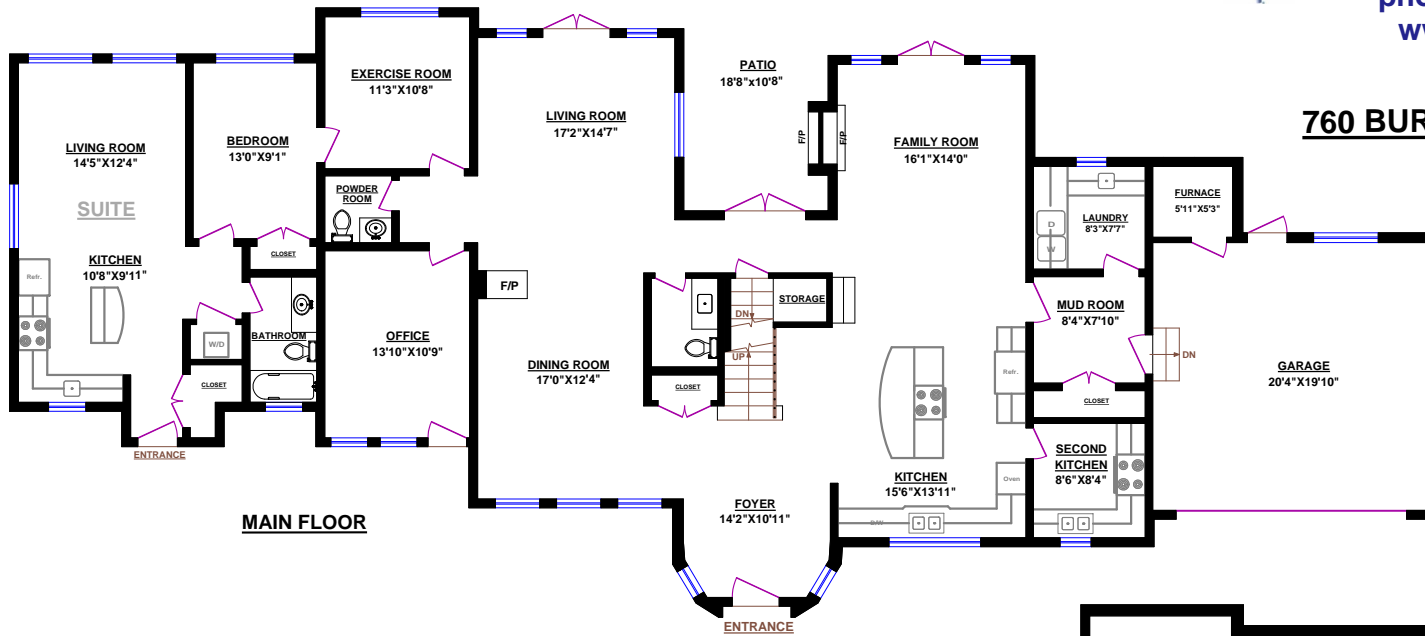




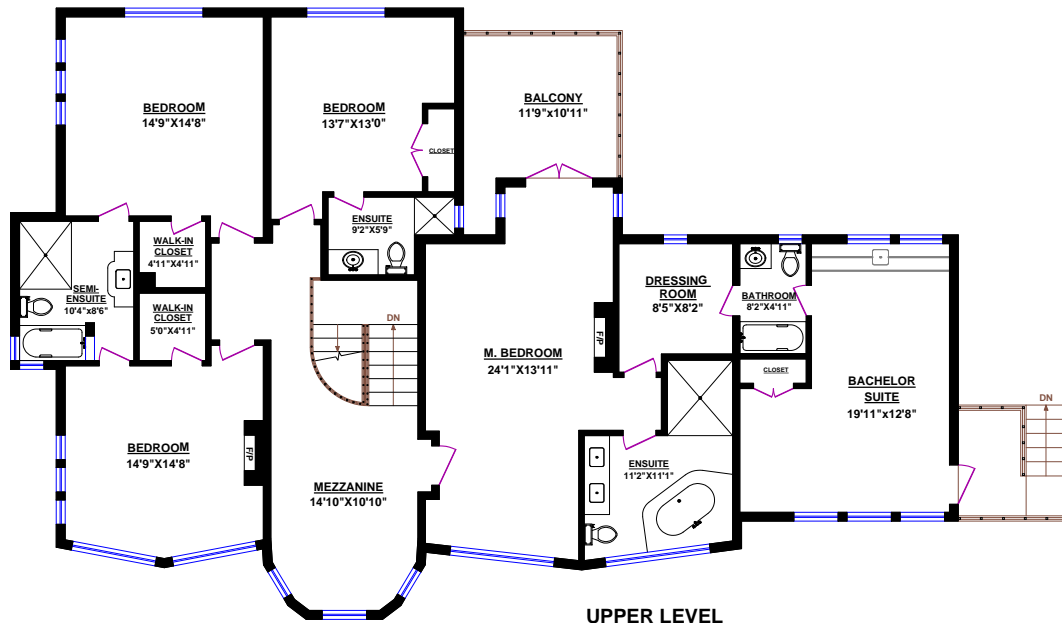
**760 BURLEY DRIVE, WEST VANCOUVER**



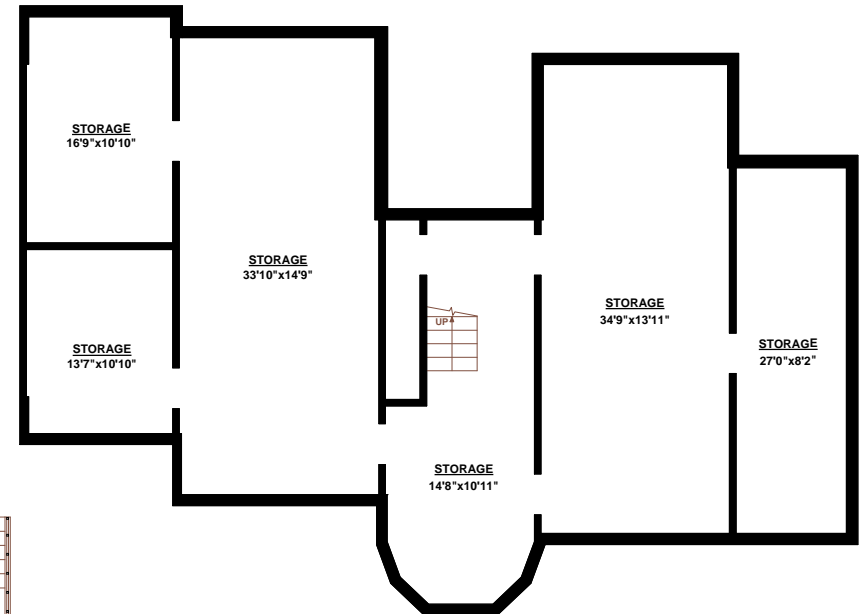
**MAIN FLOOR**

**TOTALS**  
 Main Floor (finished): 2,650 sq.ft.  
 Upper Level (finished): 2,162 sq.ft.  
**TOTAL FINISHED: 4,812 sq.ft.**  
 TOTAL UNFINISHED: 0 sq.ft.  
**GRAND TOTAL: 4,812 sq.ft.**

**OTHER AREAS:**  
 Crawl Area Storages: 2,043 sq.ft.  
 Garage: 479 sq.ft.  
 Balcony: 138 sq.ft.  
 Patio: 200 sq.ft. (approx.)



**UPPER LEVEL**



**BASEMENT-CRAWL**

