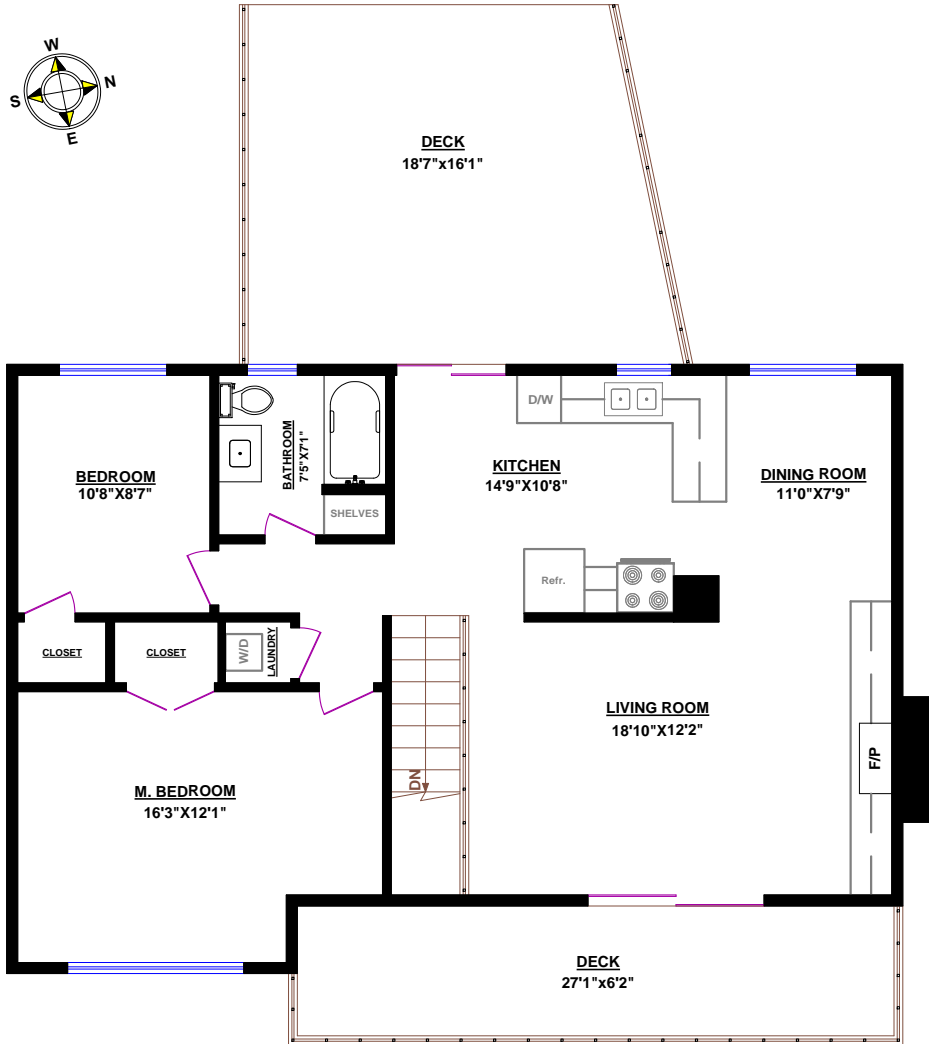


**SAM McCALL**

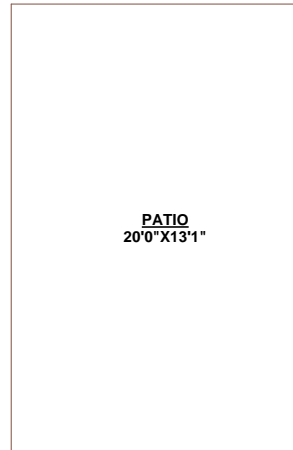
**Sam McCall Personal Real Estate Corp.**



200 - 1455 Bellevue Avenue  
West Vancouver, BC V7T 1C3  
phone: (604) 913-9000  
www.sammccall.ca



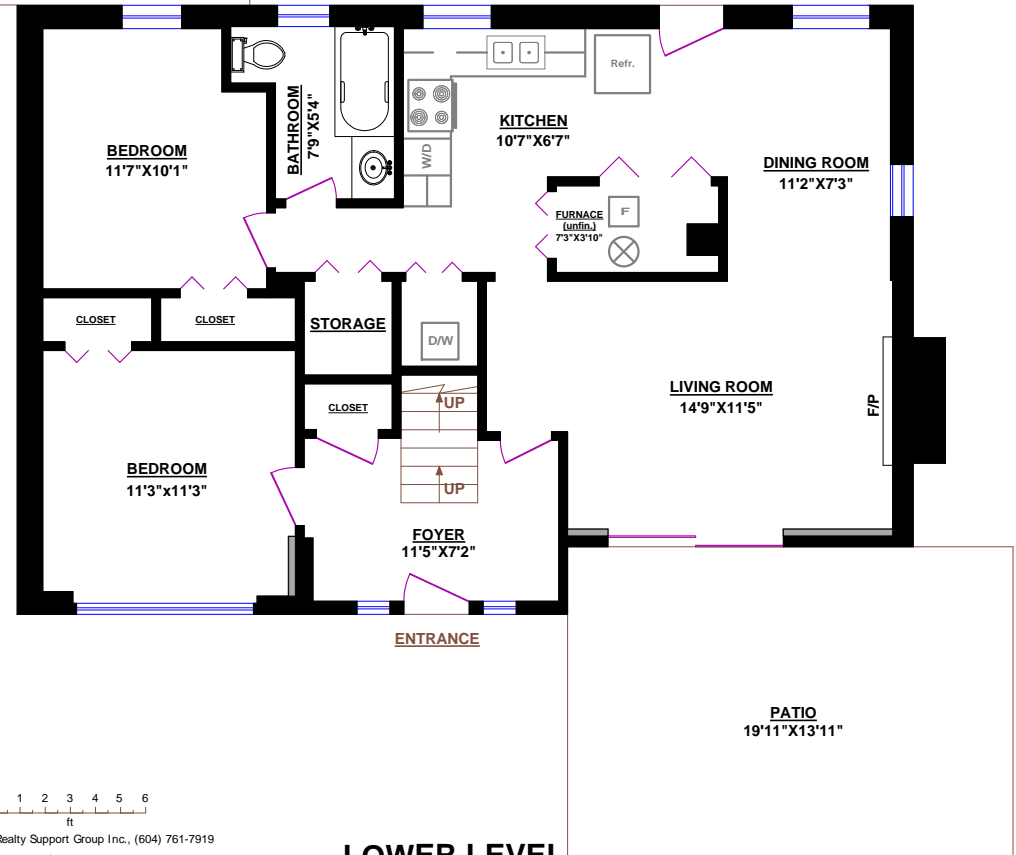
**MAIN FLOOR**



**6421 NELSON AVENUE, WEST VANCOUVER**

**TOTALS**  
Main Floor (finished): 1,009 sq.ft.  
Lower Level (finished): 1,016 sq.ft.  
**TOTAL FINISHED: 2,025 sq.ft.**  
Lower Level (unfinished): 28 sq.ft.  
**GRAND TOTAL: 2,053 sq.ft.**

**OTHER AREAS:**  
Deck: 299 sq.ft.  
Deck: 167 sq.ft.  
Patio: 262 sq.ft.  
Patio: 276 sq.ft.



**LOWER LEVEL**

