

SAM McCALL

Sam McCall Personal Real Estate Corp.



200 - 1455 Bellevue Avenue
West Vancouver, BC V7T 1C3
phone: (604) 913-9000
www.sammccall.ca



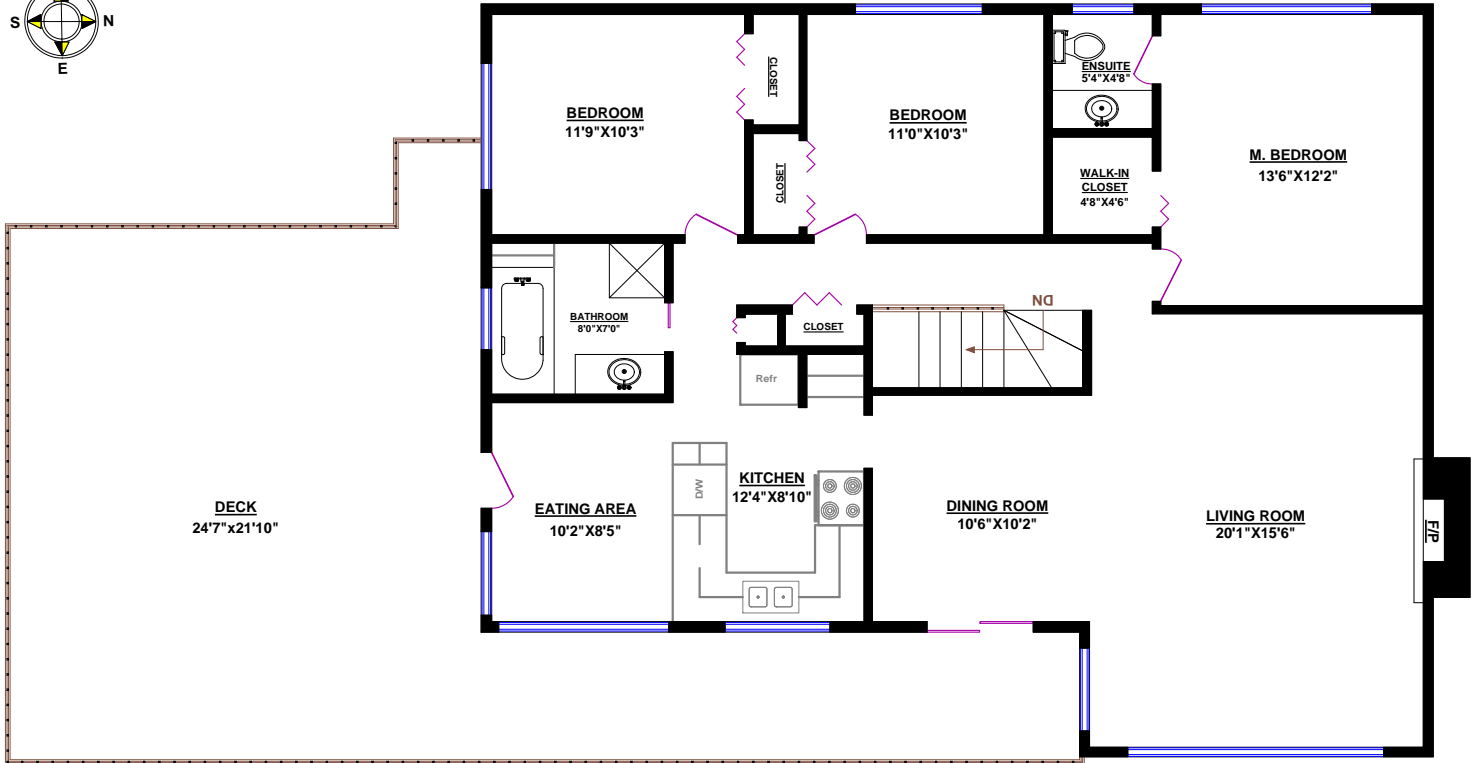
558 BALLANTREE ROAD, WEST VANCOUVER

TOTALS

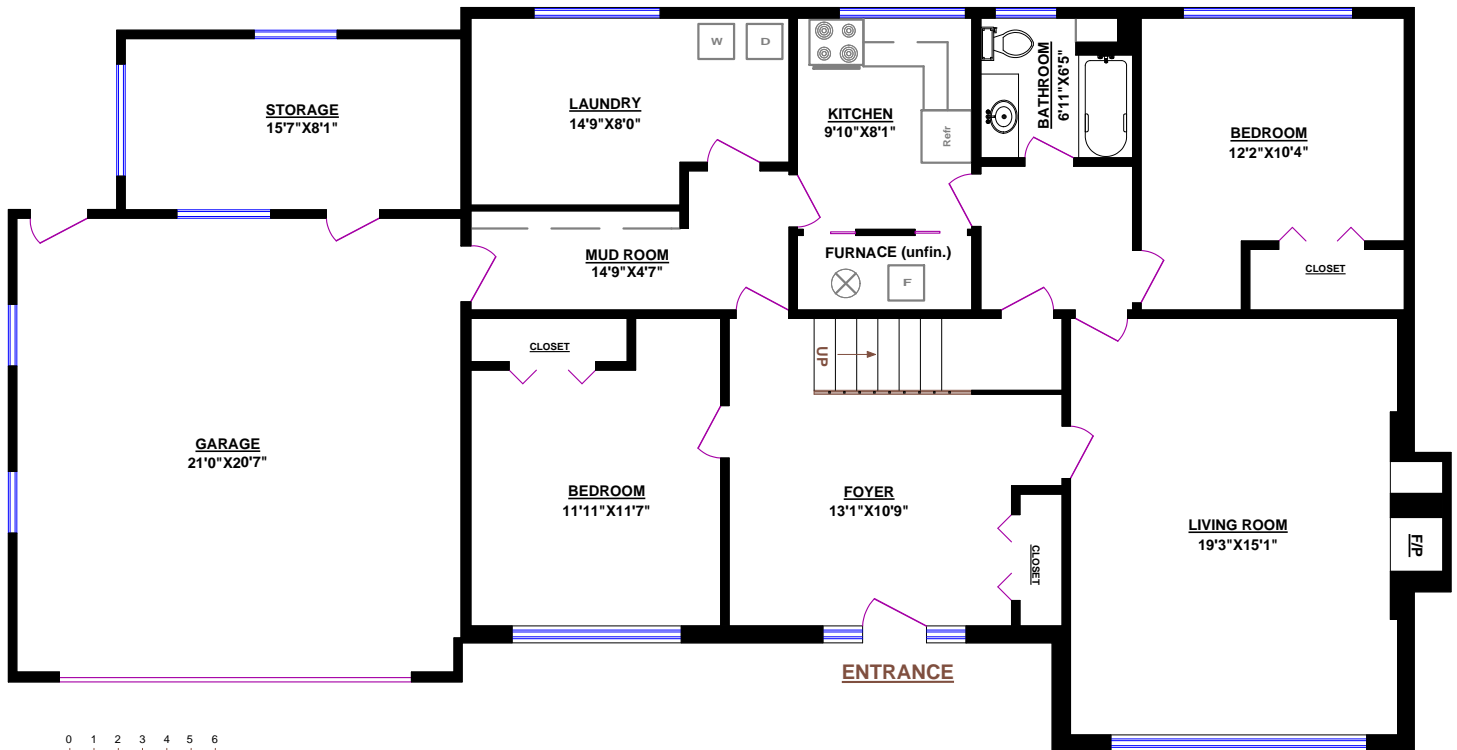
Main Floor (finished): 1,379 sq.ft.
Lower Level (finished): 1,355 sq.ft.
TOTAL FINISHED: 2,734 sq.ft.
Lower Level (unfinished): 28 sq.ft.
GRAND TOTAL: 2,762 sq.ft.

OTHER AREAS:

Garage: 456 sq.ft.
Storage: 132 sq.ft.
Deck: 716 sq.ft.



MAIN FLOOR



LOWER LEVEL