

**SAM McCALL**  
**Sam McCall Personal Real Estate Corp.**



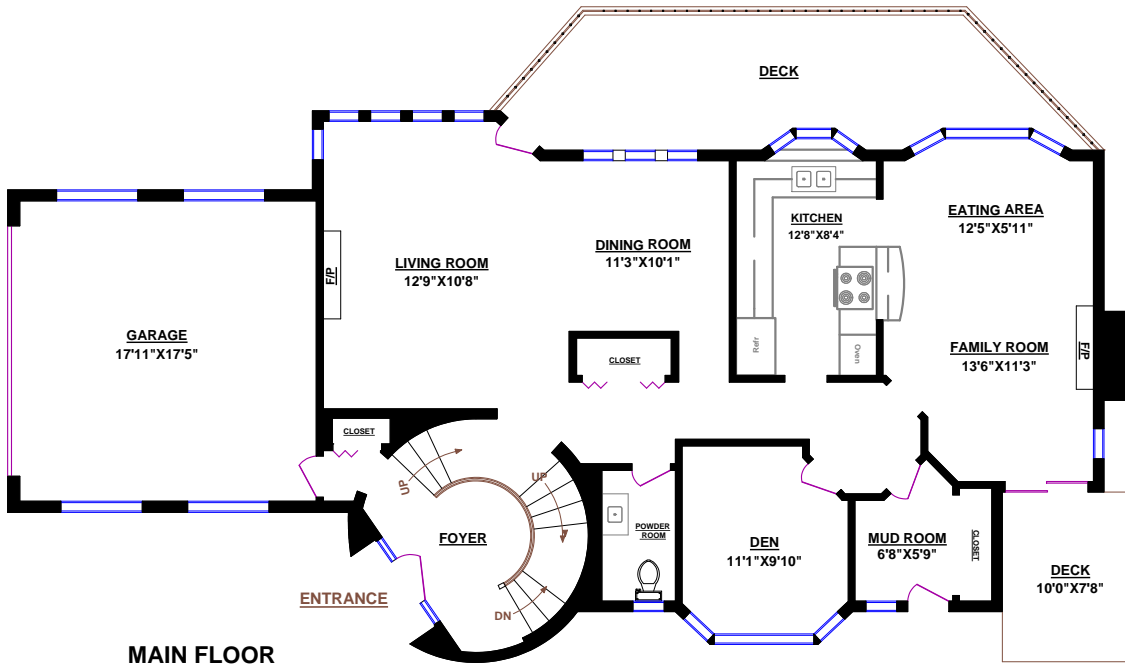
200 - 1455 Bellevue Avenue  
 West Vancouver, BC V7T 1C3  
 phone: (604) 913-9000  
 www.sammccall.ca



**4485 PICCADILLY RD. N, WEST VANCOUVER**

<b>TOTALS</b>		<b>OTHER AREAS:</b>
Main Floor (finished):	1,282 sq.ft.	Storage (unfin., low ceil.): 200 sq.ft.
Upper Level (finished)*:	1,562 sq.ft.	Garage: 346 sq.ft.
Lower Level (finished):	926 sq.ft.	Deck: 220 sq.ft.
TOTAL FINISHED*:	3,770 sq.ft.	Deck: 76 sq.ft.
TOTAL UNFINISHED:	0 sq.ft.	
GRAND TOTAL*:	3,770 sq.ft.	

\* Does not include low ceiling area of 23 sq.ft.



POOL AREA  
 42'2" X 18'4"



PATIO  
 34'9" X 8'0"

